

December 5, 2017



FY17 Second Chance Act Innovations in Supervision Initiative (ISI) Orientation

Speakers

- **Heather Tubman-Carbone, Senior Policy Advisor**
CORRECTIONS, BUREAU OF JUSTICE ASSISTANCE
- **Kara McAlister, Program Manager, Coconino County Adult Probation**
COCONINO COUNTY, AZ
- **Mary Heidel Haight, Corrections Project Manager**
CORRECTIONS AND REENTRY, THE COUNCIL OF STATE GOVERNMENTS JUSTICE CENTER

Overview

- Introduction
- Overview of SCA Innovations in Supervision Initiative (ISI)
- Grantee Support
- Questions and Answers

Bureau of Justice Assistance

Mission: to provide leadership and services in grant administration and criminal justice policy development to support local, state, and tribal justice strategies to achieve safer communities.

The Second Chance Act has supported over \$300 million in reentry investments across the country



<https://www.bja.gov/>

Innovations in Supervision Initiative Grant Program

FY17 GRANTEES

1 City Grantee
2 County Grantees
4 State Grantees

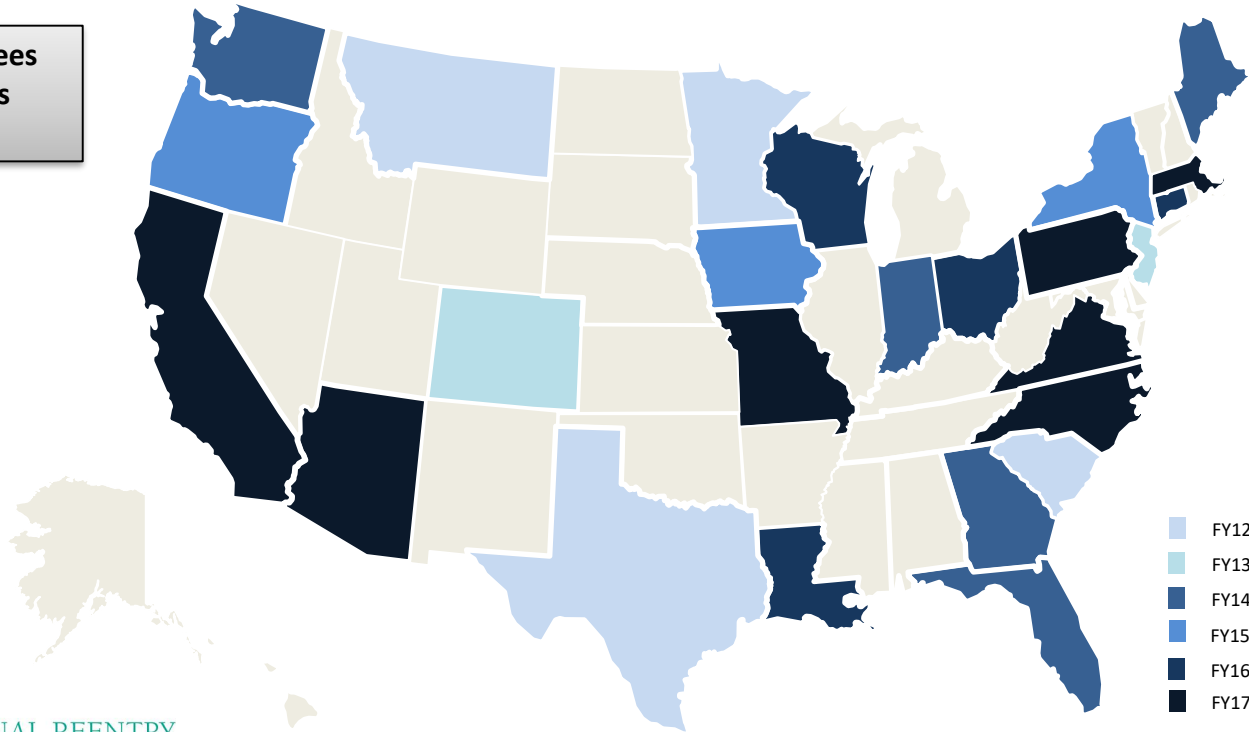
CONGRATULATIONS!

1. NC Dept. of Public Safety
2. San Diego Association of Governments
3. MA Parole Board
4. Judiciary of Arizona
5. Mayor's Office, City of Baltimore MD
6. St. Louis County Dept. of Justice Services
7. PA Board of Probation/Parole

SCA Innovations in Supervision Initiative

44 AWARDS ACROSS THE NATION

15 County Grantees
25 State Grantees
4 City Grantees



Grantee Contacts

Bureau of Justice Assistance (BJA)

- Funder
- Financial and Progress Reports, Grant Adjustment Notices (GAN)
- **BJA Policy Advisors**
 - Jennifer Lewis (West) Jennifer.L.Lewis@usdoj.gov
 - Zafra Stork (Southeast) Zafra.Stork@usdoj.gov
 - Linda Hill-Franklin (Northeast) Linda.Hill-Franklin@usdoj.gov

Booz Allen Hamilton, Inc.

- Performance Management Tool (PMT)
- PMT help desk email bjapmt@usdoj.gov or toll-free at 1-888-252-6867.

National Reentry Resource Center

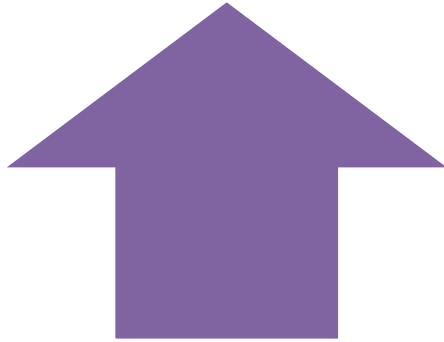
- Training and Technical Assistance

Overview

- Introduction
- Overview of SCA Innovations in Supervision Initiative (ISI)
- Grantee Support
- Questions and Answers

Innovations in Supervision Initiative (ISI)

Goal:



Increase probation/parole success rates

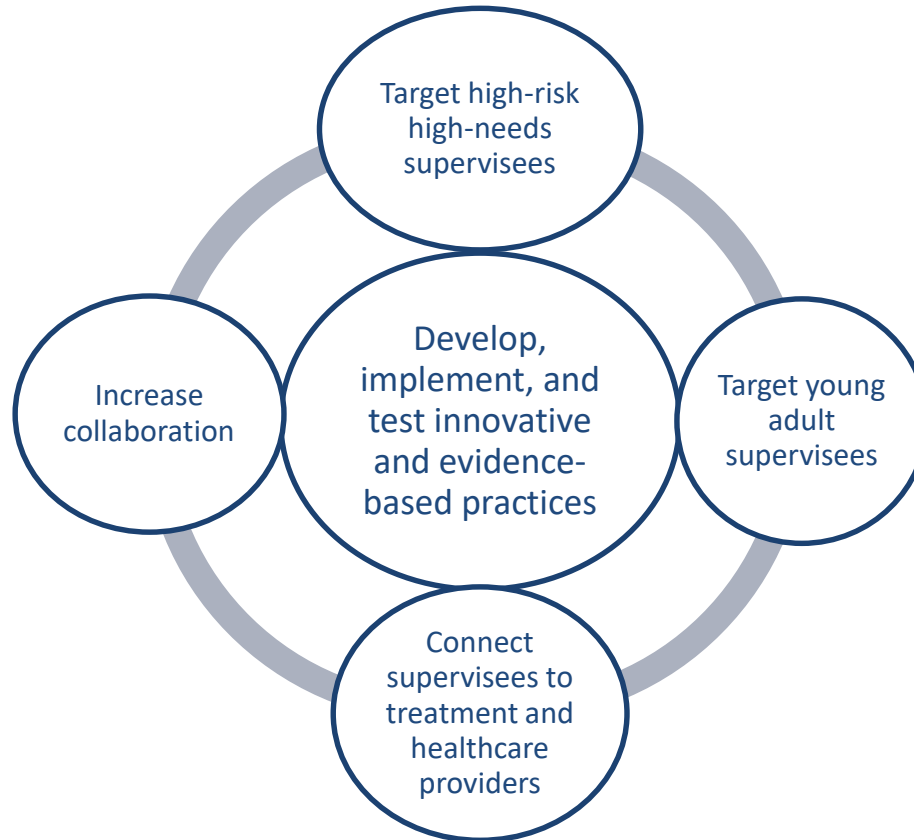


Reduce the number of crimes committed by those under probation/parole supervision

Why ISI?

- Seed money
- Research and development for the field
- Build capacity
- Test policies/strategies that increase public safety; guide supervision & revocation processes

Objectives of ISI



NRRC Technical Assistance

Your designated NRRC Technical Assistance lead will provide and coordinate support in several areas:

- ✓ Completion of the P&I Guide
- ✓ Identifying measures and strategies to track progress
- ✓ Content and facilitation support
- ✓ Sharing successes with stakeholders, the field, and the press

Overview

- Introduction
- Overview of SCA Innovations in Supervision Initiative (ISI)
- Grantee Support
- Questions and Answers



the NATIONAL REENTRY RESOURCE CENTER

- Authorized by the passage of the Second Chance Act in April 2008
- Launched by the Council of State Governments in October 2009
- Administered in partnership with the Bureau of Justice Assistance, U.S. Department of Justice
- The NRRC has provided technical assistance to over 600 juvenile and adult reentry grantees since inception

NRRC Website

[About](#)[Projects](#)[Resources](#)[Facts & Trends](#)[In the News](#)[Reentry Council](#)

the NATIONAL REENTRY
RESOURCE CENTER

— A Project of the Bureau of Justice Assistance —

Mentoring as a Component of Reentry: Practical Considerations from the Field

This publication offers five broad, field-based practical considerations for incorporating mentoring into reentry programs for adults.

[Learn More](#)



Visit the *What Works in Reentry Clearinghouse*

95% of adults sentenced to prison will return to the community.

Reentry will be their next step.



[Click to tweet this message](#)

RECENT POSTS



Second Chance Act Grantee Receives National Criminal Justice Association Award

OCTOBER 12, 2017

The Minnesota Department of Corrections was one of five organizations in the country to receive the 2017 Outstanding Criminal Justice Program Award from the National Criminal Justice Association for its High-Risk Revocation Reduction program.



Second Chance Act Participant Spotlight: Sharon Hadley, Harris County, Texas

ANNOUNCEMENTS

- [Register for Webinar: Criminal Record Clearance and the Clean Slate Clearinghouse](#)
- [Apply Now: Open Society Foundations Soros Justice Fellowships](#)
- [Apply Now: Training and Technical Assistance Services for Pay for Success Projects](#)
- [Celebrate Apprenticeship and Work-Based Learning](#)



Sign Up for the NRRC Newsletter

Subscribe to Newsletters and Announcements

* indicates required

| | |
|----------------------|----------------------|
| First Name | Last Name |
| <input type="text"/> | <input type="text"/> |

Email Address

| | |
|----------------------|----------------------|
| Title | Organization |
| <input type="text"/> | <input type="text"/> |

| | |
|----------------------|----------------------|
| Zip Code | State |
| <input type="text"/> | <input type="text"/> |

Choose the topics you'd like to hear about:

| | |
|---|---|
| <input type="checkbox"/> Behavioral Health | <input type="checkbox"/> Law Enforcement |
| <input type="checkbox"/> Corrections | <input type="checkbox"/> Reentry |
| <input type="checkbox"/> Courts | <input type="checkbox"/> Reentry and Employment Project |
| <input type="checkbox"/> Government Affairs/Action Alerts | <input type="checkbox"/> Youth |
| <input type="checkbox"/> Justice Reinvestment | <input type="checkbox"/> Clean Slate Clearinghouse |

Preferred format

☒ HTML ☐ Text

If you'd like to see the types of messages we send, here's an archive of some recent newsletters and announcements that some of our subscribers receive.

MOST RECENT NEWSLETTERS

- [Juvenile Justice Roundup](#)
- [Justice Reinvestment Roundup](#)
- [Register for Webinar: Criminal Record Clearance and the Clean Slate Clearinghouse](#)
- [National Reentry Resource Center Newsletter, October 2017](#)
- [New FBI Crime Data Takes Search for Solutions to the State, Local Level](#)
- [Criminal Justice/Behavioral Health Newsletter, October 2017](#)

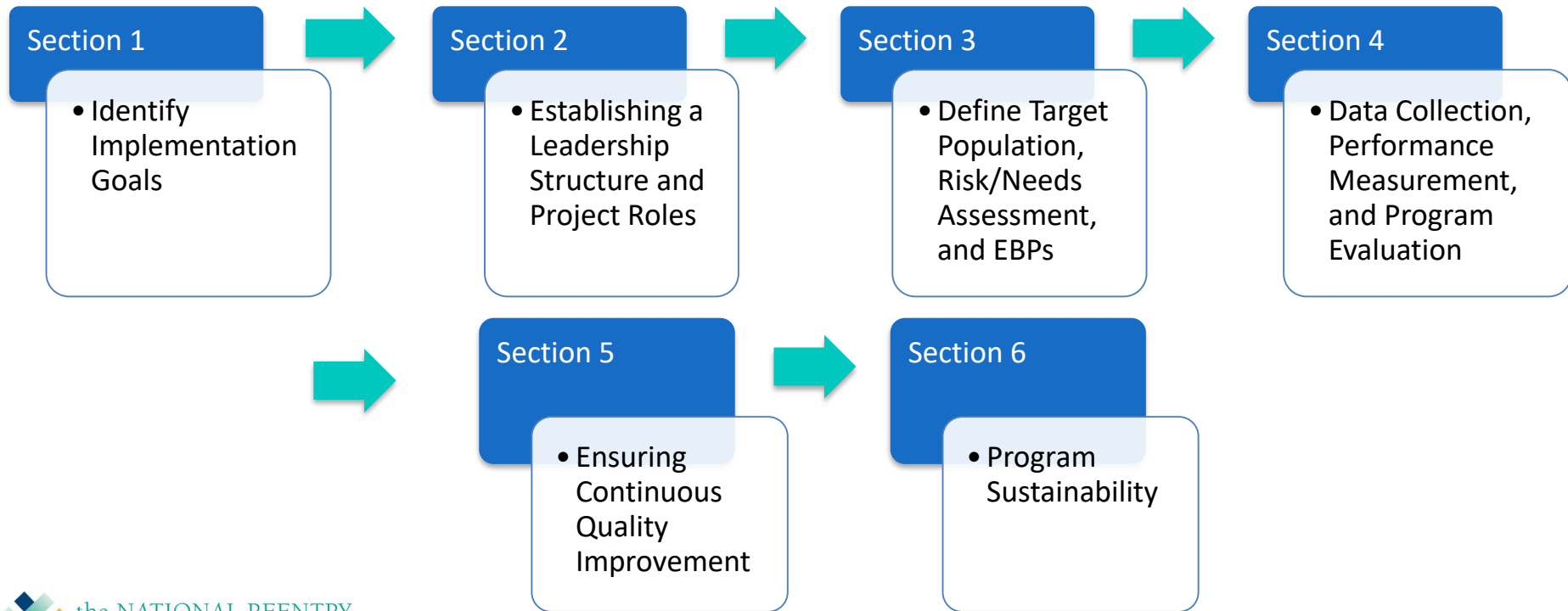
Technical Assistance Activities



Planning & Implementation Guide

- Support implementation of proposed initiatives
- Establish/engage leadership
- Develop a comprehensive program oriented around EBPs
- Communicate progress with key stakeholders
- Evaluate the program and think about sustainability
- Develop priorities for technical assistance

P & I Guide Walk Through



P & I Guide – Section 1

- **Identifying Implementation Goals**
 - Grantee at a Glance

P & I Guide – Section 2

- **Establishing a Leadership Structure and Project Roles**
 - Inventory of Partners
 - Collaborative Leadership

P & I Guide – Section 3

- **Defining Your Target Population**
 - Defining Your Target Population
 - Risk and Needs Assessment

Implementing Quality Programs

- **Research** the target population to determine needs of participants.
- **Learn** whether there are a sufficient number of programs and program slots in each domain area to address need.
- **Review** the content of the programs to assess fidelity to evidence-based practices and consider aspects of the program that affect participants' outcomes, including staff skills and community linkages.
- **Address** any deficiencies by providing training to service providers about general and specific topics, such as reentry and risk.
- **Develop** strategies to hold service providers accountable, such as a performance-based contracting system.

P & I Guide – Section 4

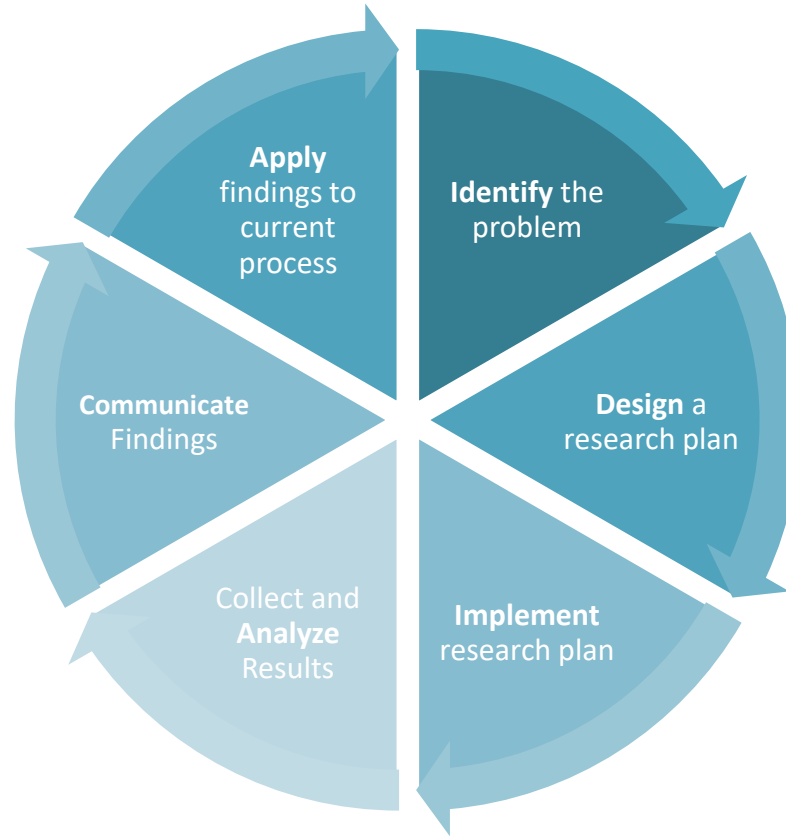
- **Data Collection, Performance Measurement, and Program Evaluation**
 - Logic Model
 - Describing the Evaluation Plan

P & I Guide – Logic Model

Sample Logic Model

| Project Goals | Inputs/Resources (Existing and Grant-Funded) | Activities and Timeline | Outputs/ Process Measures | Short-Term Outcomes | Long-Term Outcomes |
|---|---|---|--|--|---|
| Implement risk and/or needs assessment tool | Grant funds; correctional staff training funds | Integrate tool into intake process and reentry case planning (Begin in March 2018) | Number of assessments completed | Administer risk and needs assessment tool for all participants upon intake | Develop all case plans based on needs identified through assessment |
| Train reentry staff in evidence-based cognitive behavioral intervention (CBI) | Grant funds to pay for .5 FTE supervision officer; grant funds to pay for .5 FTE reentry staff | Train staff in T4C (Training in April 2018) | Number of staff trained; number of training courses completed by staff; number of new case plans that incorporate CBI based on needs assessment | Train all reentry staff in T4C | Provide T4C no later than 90 days before release to all participants who are identified as having the criminogenic need of criminal thinking/behavior |

Action Research



Innovations Suite
Researcher-Practitioner
Fellows Academy
Summer 2018

P & I Guide – Section 5

- **Ensuring Continuous Quality Improvement**
 - Workforce Development
 - Direct Services

P & I Guide – Section 6

- **Sustainability**
 - Planning for Program Sustainability

Grantee Experience



COCONINO ONLINE PROBATION EDUCATION (COPE) GRANT OVERVIEW

- OBJECTIVE: REDUCE RECIDIVISM
 - **ONLINE** CURRICULA THAT CLIENTS OUTSIDE FLAGSTAFF CAN USE/COGNITIVE BEHAVIORAL PROGRAMMING
 - PROVIDE OPPORTUNITY FOR OUTLYING CLIENTS TO JOIN MRT CLASSES VIA TECHNOLOGY
 - PROVIDE MENTORING TO CLIENTS TO HELP THEM SUCCEED ON PROBATION (INCLUDING FLAGSTAFF CLIENTS)



- PARTNERSHIP WITH SUNNYSIDE NEIGHBORHOOD ASSOCIATION
 - MENTORING SPECIALIST HOUSED AT SUNNYSIDE

Examples of online courses available to clients:

- DUI
- Shoplifting
- Substance abuse
- Anger management
- Financial responsibility



Tuba City, AZ on the Navajo Nation – equipment installed and tribal partnership in place!



Three other sites around Coconino County (Williams, Page and Sunnyside) were set up similarly for COPE program components.



Q & A

Resources

- [A Ten-Step Guide to Transforming Probation Departments to Reduce Recidivism](#)
- <https://www.urban.org/sites/default/files/publication/32201/411800-Putting-Public-Safety-First--Strategies-for-Successful-Supervision-and-Reentry-Policy-Brief-.PDF>
- <http://www.pewtrusts.org/en/research-and-analysis/issue-briefs/2009/07/17/maximum-im>
- <https://www.ncjrs.gov/pdffiles1/nij/grants/243911.pdf>

Thank you!

Join our distribution list to receive
National Reentry Resource Center updates!

www.csgjusticecenter.org/subscribe

For more information, contact
info@nationalreentryresourcecenter.org

This presentation was prepared by The Council of State Governments (CSG) Justice Center, in partnership with the U.S. Department of Justice's Bureau of Justice Assistance. Presentations are not externally reviewed for form or content. The statements reflect the views of the authors and should not be considered the official position of the CSG Justice Center, the members of The Council of State Governments, or the Bureau of Justice Assistance.