

Second Chance Act:

Responding to the FY 2018 Solicitation
Innovations in Reentry Initiative: Reducing Recidivism
Through Systems Improvement

June 6, 2018

Speakers

DeAnna Hoskins, Senior Policy Advisor

US Department of Justice Bureau of Justice
Assistance

**Elizabeth English, Policy Analyst, Council of State
Governments Justice Center**

Poll of Attendees

We'd like to find out more about who's on the line...

In your right-hand column, you will see the question:

Please indicate the type of organization you represent:

- ☐ County or local government agencies serving adults
- ☐ Federally recognized Indian and Alaska Native tribes serving adults

Overview

- Introduction
- Overview of the SCA Innovations in Reentry Initiative (IRI)
- IRI Program Requirements and Expectations
- Contact Information, Resources, and Q&A



the NATIONAL REENTRY RESOURCE CENTER

- Authorized by the passage of the Second Chance Act in April 2008.
- Upon competitive process, Council of State Governments awarded in October 2009.
- Administered in partnership with the Bureau of Justice Assistance, U.S. Department of Justice.
- The NRRC has provided technical assistance to over 600 juvenile and adult reentry grantees since inception.

WEBSITE: <http://nationalreentryresourcecenter.org>

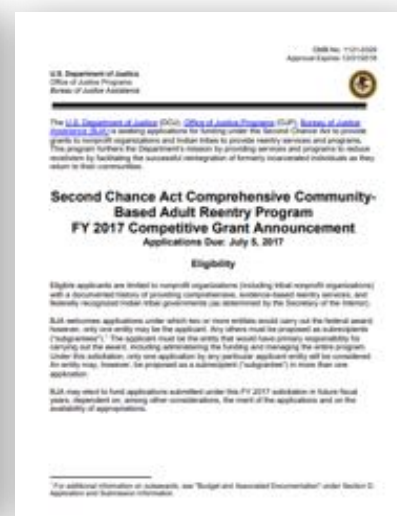
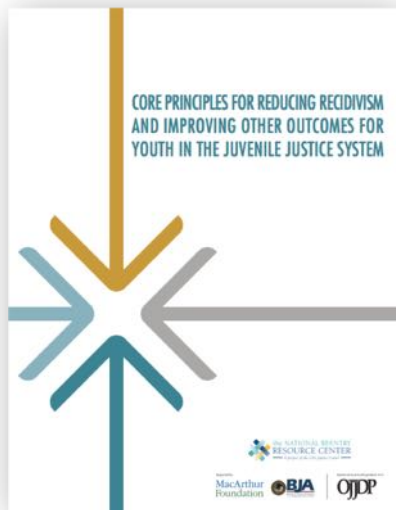


The screenshot shows the homepage of the National Reentry Resource Center. At the top is a navigation bar with links: About, Projects, Resources, Facts & Trends, In the News, and Reentry Council. The main header features the organization's logo and name, "the NATIONAL REENTRY RESOURCE CENTER", with the tagline "A Project of the Bureau of Justice Assistance".

Below the header, there are several featured sections:

- Mentoring as a Component of Reentry: Practical Considerations from the Field**: A text-based article preview with a "Learn More" link.
- 95% of adults sentenced to prison will return to the community. Reentry will be their next step.**: A large blue and white graphic with a Twitter share button labeled "Click to tweet this message".
- RECENT POSTS**: A section with two posts:
 - Second Chance Act Grantee Receives National Criminal Justice Association Award**: Includes a photo of three people and text stating that the Minnesota Department of Corrections received the 2017 Outstanding Criminal Justice Program Award.
 - Second Chance Act Participant Spotlight: Sharon Hadley, Harris County, Texas**: Includes a small photo of Sharon Hadley.
- ANNOUNCEMENTS**: A list of upcoming events and opportunities:
 - Register for Webinar: Criminal Record Clearance and the Clean Slate Clearinghouse
 - Apply Now: Open Society Foundations Soros Justice Fellowships
 - Apply Now: Training and Technical Assistance Services for Pay for Success Projects
 - Celebrate Apprenticeship and Work-Based Learning

Publications and Announcements



Overview

- Introduction
- Overview of the SCA Innovations in Reentry Initiative (IRI)
- IRI Program Requirements and Expectations
- Contact Information, Resources, and Q&A

Bureau of Justice Assistance

Mission: to provide leadership and services in grant administration and criminal justice policy development to support local, state, and tribal justice strategies to achieve safer communities.

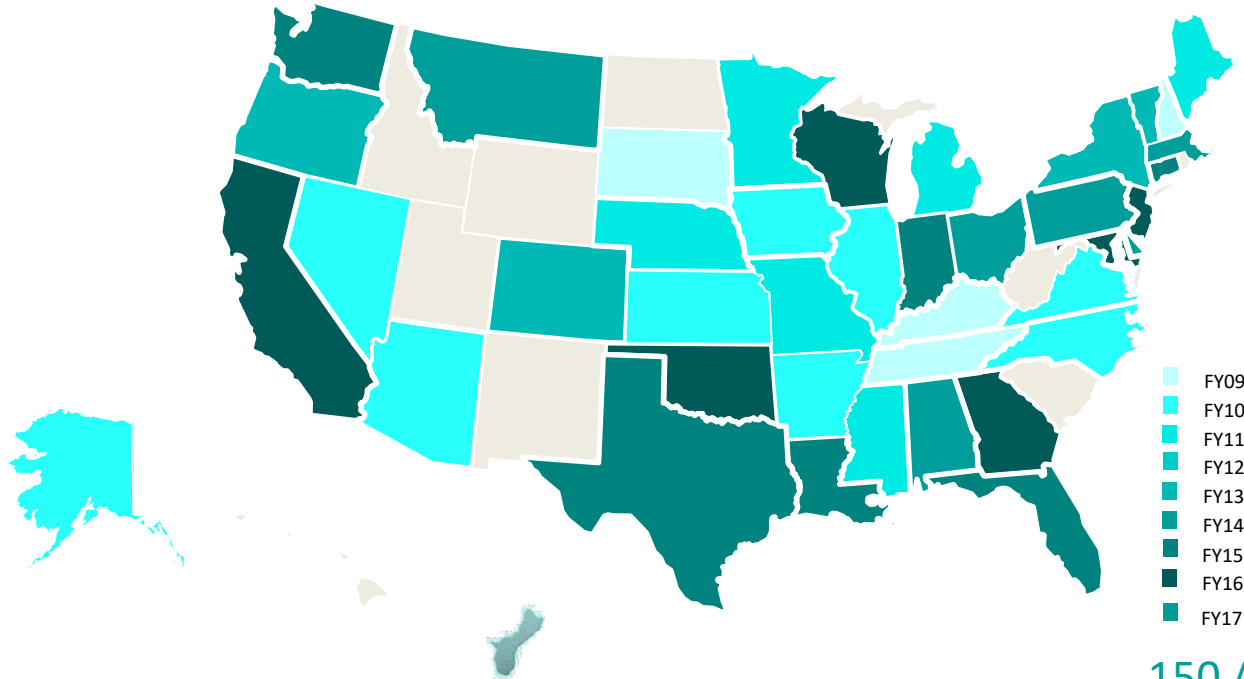
The Second Chance Act has supported over \$300 million in reentry investments across the country



<https://www.bja.gov/>

Innovations in Reentry Initiative

FY09 - FY17



150 Awards
Over \$55 Million in funding

Poll of Attendees

We'd like to find out more about who's on the line...

In your right-hand column, you will see the question:

Have you previously applied for an SCA grant?

- ☐ Yes
- ☐ No

Overview of the SCA Innovations in Reentry Initiative

- * Provide resources to identify assets and gaps in local reentry systems

- * Develop capacity and partnerships with other justice agencies

- * Provide services that prevent recidivism, reduce crime, and improve public safety in their jurisdictions.

Award Information



Planning: \$200,000	Implementation: \$800,000
------------------------	------------------------------

Up to Eight Awards @ \$1,000,000

Overall Objective of IRI

- Reduce recidivism among reentering individuals who are at medium to high risk for recidivating and to improve public safety

Priority Considerations

- Strategies to reduce violent recidivism
- Collaboration/partnership with existing violence reduction strategies
- Focus on geographic areas with disproportionate population of reentrants

Target Population

- Assessed as medium to high risk
- Serve a minimum of 150 individuals through the funding period – with the majority under parole or probation supervision

Mandatory SCA Requirements

Twelve

(see pgs. 5-6
for complete
listing)

Strategic plan

Implementation schedule and sustainability

Engagement of reentry task force

Collaboration to pool resources, collect data, address local barriers to reentry

Independent evaluation

LOS from correctional facilities

Support from chief executive officer

Evidence-based methods and outcome measures

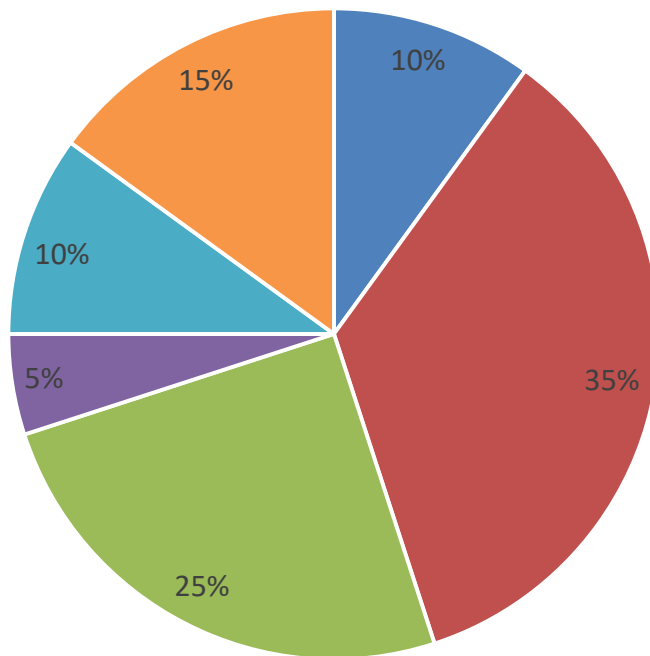
How scaled up or replicated

Analysis of statutory and other hurdles to reintegration

Overview

- Introduction
- Overview of the SCA Innovations in Reentry Initiative (IRI)
- IRI Program Requirements and Expectations
- Contact Information, Resources, and Q&A

Review Criteria



Description of the Issue

- Mandatory SCA requirements
- Nature and scope of the problems
- Efforts to date
- Need for assistance and resources
- Baseline recidivism rate

Program Design & Implementation

- BJA program requirements
- Timeline/program plan of major tasks & deliverables
- Data to support the program design
- Roles/responsibilities of partners
 - Identify target population
 - Identify two domains to remedy reentry barriers
- Describe pre- and post-release services
- Number to be served

BJA IRI Program Requirements

- Reentry Coordinator
- Reassess partnerships
- Re-evaluate reentry strategic plan
- Conduct system analysis
- Collect data
- Identify high-risk population and individualize/target services and interventions
- Baseline recidivism rate
- Analyze 2 domains and develop implementation plans
- Research partnership
- Ensure expertise in 6 areas listed
- Complete final analysis and research report
- Track unique identifiers
- Use validated risk/needs assessment
- Use evidence-based, cognitive-based programming pre/post-release
- Describe pre/post-release services
- Complete P & I Guide
- Complete final report

See page 7 of the solicitation for details

Domain Areas to Analyze

Behavioral
Health

Community
Supervision

Education

Employment

Housing

Poll of Attendees

We'd like to find out more about your reentry priorities...

In your right-hand column, you will see the question:

Select one of the following domains you hope to address through this initiative:

- Behavioral Health
- Community Supervision
- Education
- Employment
- Housing

Capabilities and Competencies

- Management structure/staffing
- Agency responsible for program and reentry coordinator
- How structure/staffing will accomplish the deliverables (attach resumes and role descriptions)

Plan for Collecting the Data

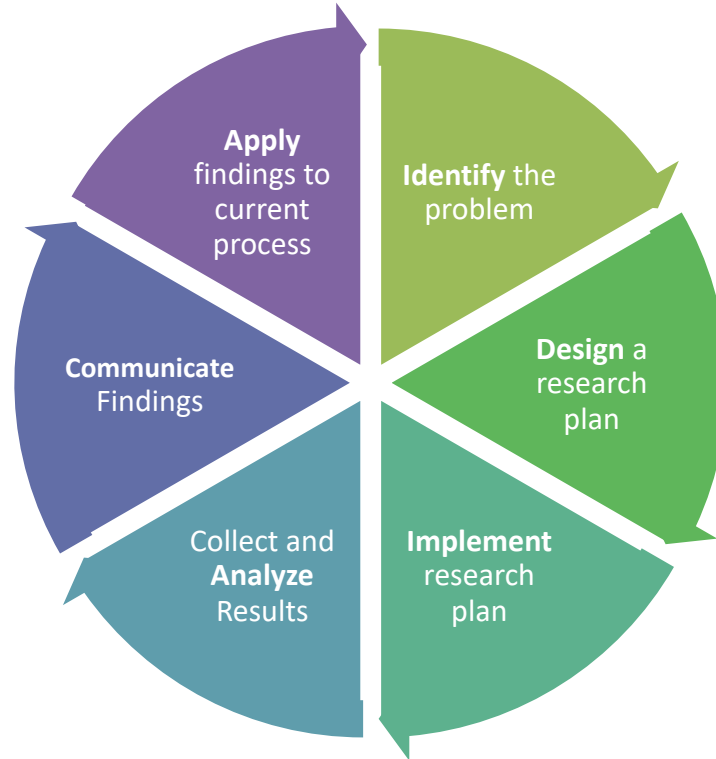
- What, How, Who
- Performance metrics – documented, monitored, evaluated



Impact/Outcomes, Evaluation, Sustainability

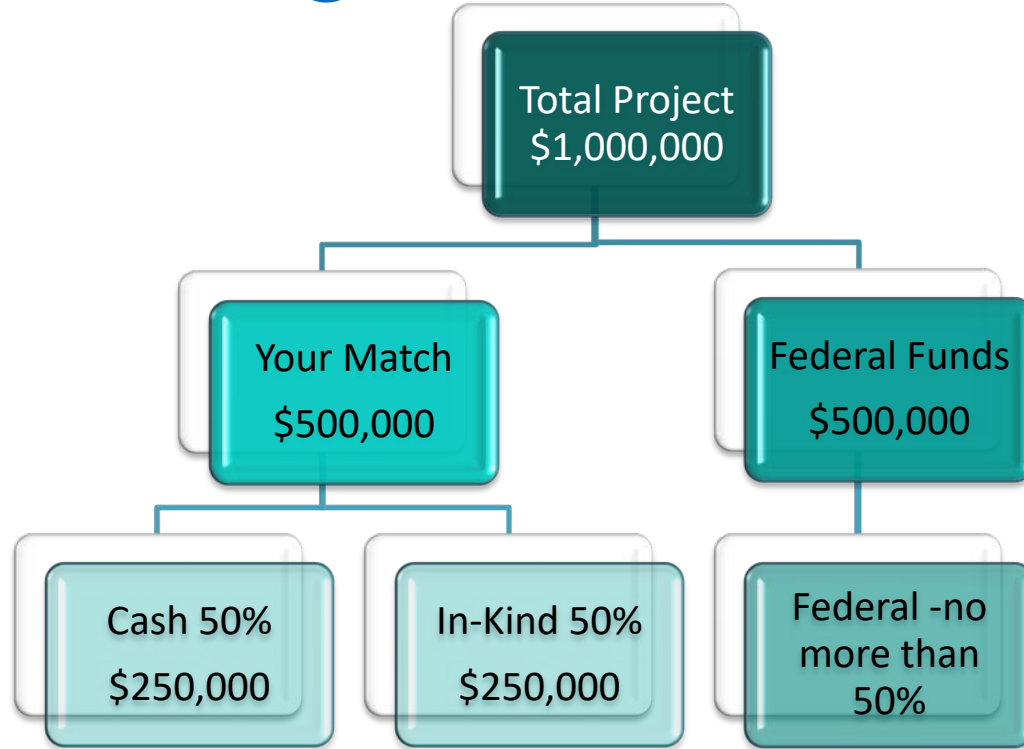
- Integration into local justice system
- Financial sustainability
- Performance monitoring and evaluation
- Tracking unique identifiers, access to recidivism data
- Ability to assess risk/needs, track responsiveness and dosage of services for individuals

Action Research



Budget

*A match
waiver request
may be
submitted (not
guaranteed)*



Overview

- Introduction
- Overview of the SCA Innovations in Reentry Initiative (IRI)
- IRI Program Requirements and Expectations
- Contact Information, Resources, and Q&A

Applying

Applicants must register at

<https://www.grants.gov/web/grants/register.html>

prior to submitting an application.

Grants.gov Workspace is now the standard application method for applying for grants.

Applications are due **June 25, 2018 11:59 pm eastern time**

Contact Information

For questions about the process of submitting an application:

- Contact the Grants.gov Customer Support Hotline at 800-518-4726, 606-545-5035, at <https://www.grants.gov/web/grants/support.html>, or at support@grants.gov. The Grants.gov Support Hotline operates 24 hours a day, 7 days a week, except on federal holidays.

For assistance with unforeseen Grants.gov technical issues beyond an applicant's control:

- Contact the National Criminal Justice Reference Service (NCJRS) Response Center at 800-851-3420, via TTY at 301-240-6310 (hearing impaired only), email_grants@ncjrs.gov or web chat at <https://webcontact.ncjrs.gov/ncjchat.jsp>. NCJRS Response Center hours are 10 a.m. to 6 p.m. ET, Monday-Friday, and 10 a.m. to 8 p.m. ET on the solicitation close date.

Resources

- **National Reentry Resource Center (NRRC)** BJA and the Office of Juvenile Justice and Delinquency Prevention (OJJDP) collaborate on the oversight of the [National Reentry Resource Center](#). ***All grantees will receive intensive assistance from NRRC.***
- Office of Justice Programs Crime Solutions website (<https://www.crimesolutions.gov/>)
- National Implementation Research Network website (<http://nirn.fpg.unc.edu/>)
- [Winning Grants-Writing your way to success](#)
- [Winning Grants - Implementation and Organizational Capacity](#)

Questions and Answers

Thank you!

Join our distribution list to receive
National Reentry Resource Center updates!

www.csgjusticecenter.org/subscribe

For more information, contact
info@nationalreentryresourcecenter.org

This presentation was prepared by The Council of State Governments (CSG) Justice Center, in partnership with the U.S. Department of Justice's Bureau of Justice Assistance. Presentations are not externally reviewed for form or content. The statements reflect the views of the authors and should not be considered the official position of the CSG Justice Center, the members of The Council of State Governments, or the Bureau of Justice Assistance.