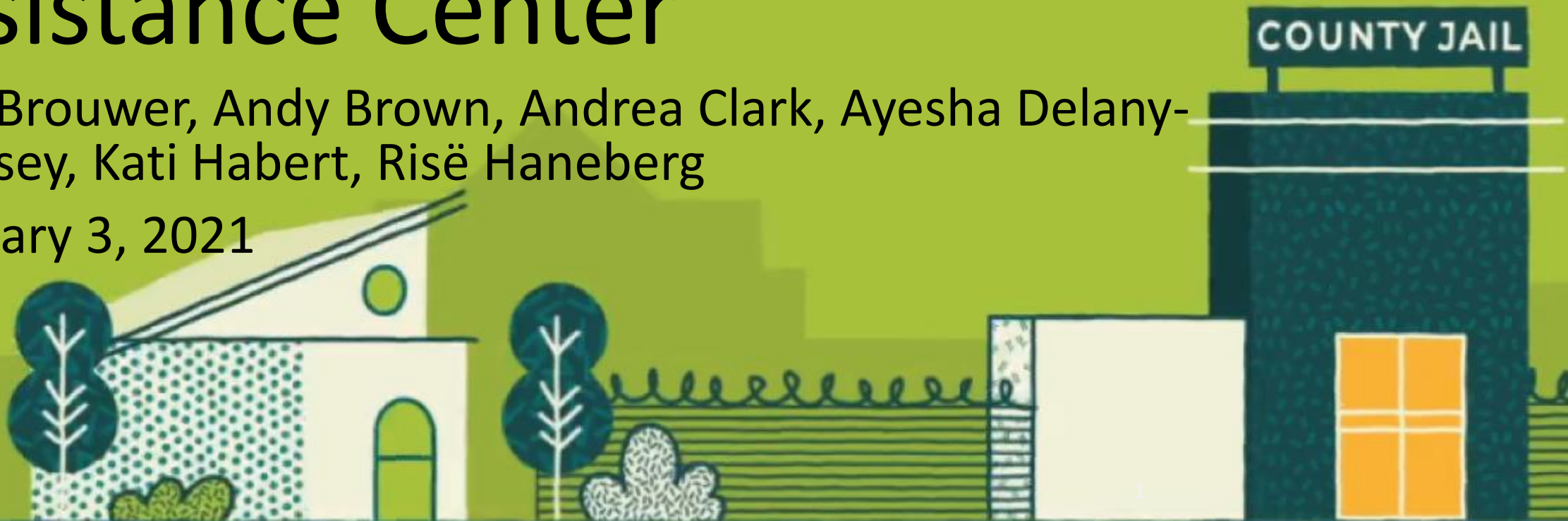




Stepping Up Kansas Technical Assistance Center

Mike Brouwer, Andy Brown, Andrea Clark, Ayesha Delany-Brumsey, Kati Habert, Risë Haneberg

February 3, 2021



Agenda

- Welcome and introductions
- Welcoming Remarks
- How We Got Started
- The Stepping Up Initiative
- Douglas County, Kansas
- Description of the Stepping Up Kansas Technical Assistance Center
- Questions and Answers

Speakers

- **Mike Brouwer**, Criminal Justice Coordinator, Douglas County, Kansas
- **Andy Brown**, Commissioner, Behavioral Health Services, Kansas Department for Aging and Disability Services
- **Andrea Clark**, CIT/Veterans Program Coordinator, Behavioral Health Services Commission, Kansas Department for Aging and Disability Services
- **Dr. Ayesha Delany-Brumsey**, Director, Behavioral Health Division, The Council of State Governments Justice Center
- **Kati Habert**, Program Director, The Council of State Governments Justice Center
- **Risë Haneberg**, Deputy Division Director, The Council of State Governments Justice Center

Welcoming Remarks

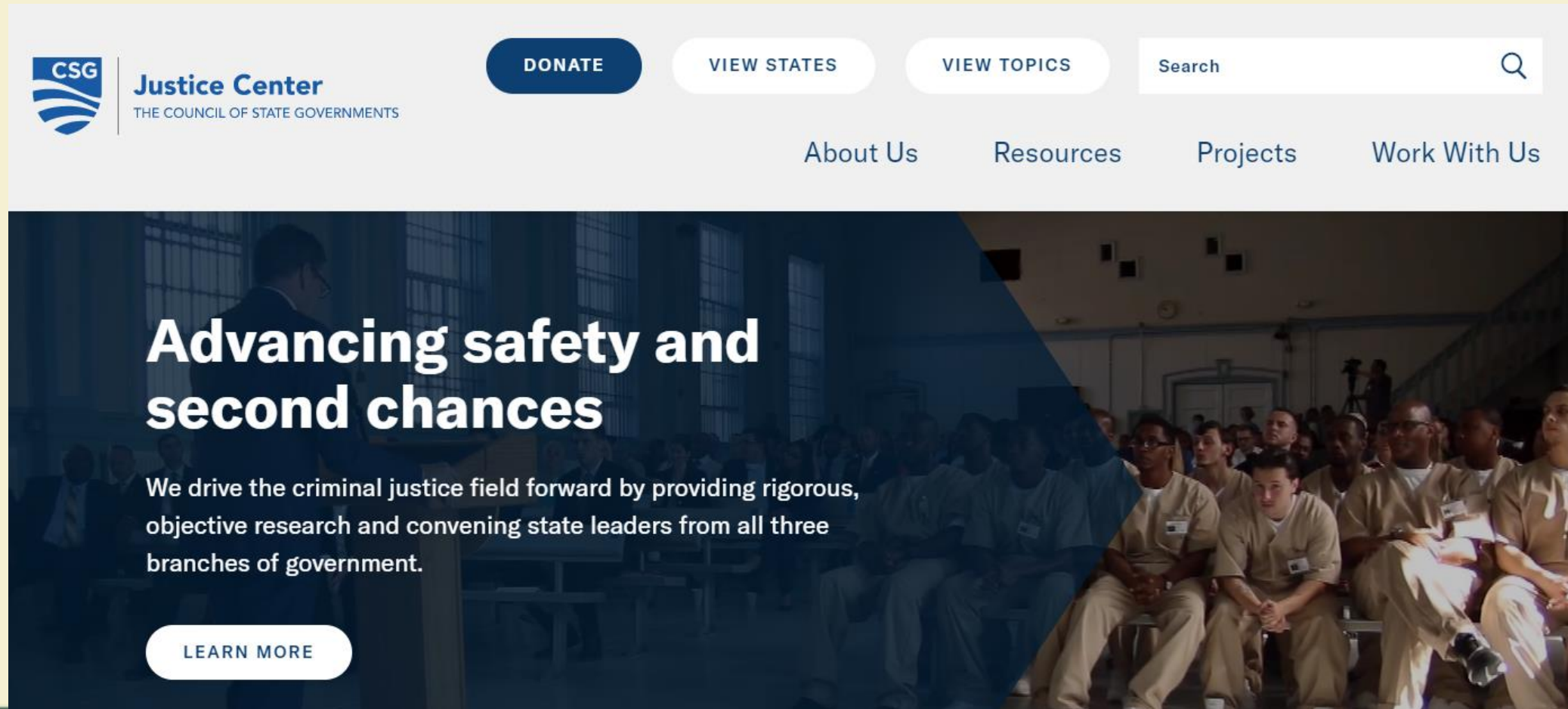
Andy Brown, Commissioner, Behavioral Health Services,
Kansas Department for Aging and Disability Services

Dr. Ayesha Delany-Brumsey, Director, Behavioral Health
Division, The Council of State Governments Justice Center

KDADS Supports the Stepping Up Kansas TA Center

- Included as part of the Kansas Department for Aging and Disability Services (KDADS) Mental Health in Jails 2020 State Action Plan
- 3-year collaboration between KDADS and The CSG Justice Center, with cross-system collaboration with key partners from state and local agencies

The Council of State Governments Justice Center



The screenshot shows the top portion of the Council of State Governments Justice Center website. The header is light gray and contains the CSG Justice Center logo on the left, which includes the text 'CSG' in a blue square and 'Justice Center' in blue, with 'THE COUNCIL OF STATE GOVERNMENTS' in smaller blue text below. To the right of the logo are three buttons: 'DONATE' in a dark blue rounded rectangle, 'VIEW STATES' in a white rounded rectangle, and 'VIEW TOPICS' in a white rounded rectangle. Further right is a search bar with the placeholder text 'Search' and a magnifying glass icon. Below the header is a navigation bar with four links: 'About Us', 'Resources', 'Projects', and 'Work With Us'. The main hero section features a large image of a group of people in a courtroom or hearing room, with a dark blue diagonal overlay on the left side. Overlaid on this image is the text 'Advancing safety and second chances' in large white font, followed by a paragraph: 'We drive the criminal justice field forward by providing rigorous, objective research and convening state leaders from all three branches of government.' Below this text is a white rounded rectangle button with the text 'LEARN MORE'.

CSG Justice Center
THE COUNCIL OF STATE GOVERNMENTS

DONATE VIEW STATES VIEW TOPICS Search

About Us Resources Projects Work With Us

Advancing safety and second chances

We drive the criminal justice field forward by providing rigorous, objective research and convening state leaders from all three branches of government.

LEARN MORE

THE STEPPINGUP INITIATIVE

Stepping Up is a national initiative to reduce the number of people with mental illnesses and co-occurring substance use disorders in jails.



Justice Center
THE COUNCIL OF STATE GOVERNMENTS

AMERICAN
PSYCHIATRIC
ASSOCIATION
FOUNDATION



#StepUp4MentalHealth
www.StepUpTogether.org

THE STEPPINGUP INITIATIVE

Five Years AND COUNTING

More than **520** counties across **43** states have joined Stepping Up to reduce the prevalence of mental illness in jails.



48%

of the U.S. population lives in a Stepping Up county.



Approximately **2 million** times each year, people who have serious mental illnesses are admitted to jails.



27 Innovator Counties are blazing the trail in data collection.

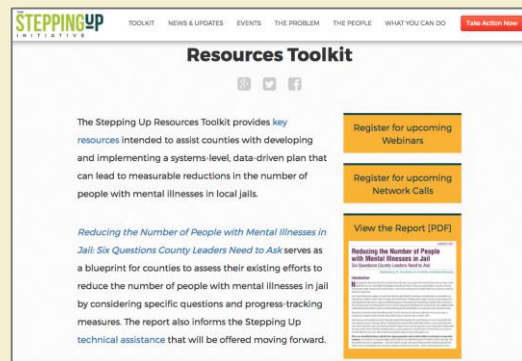
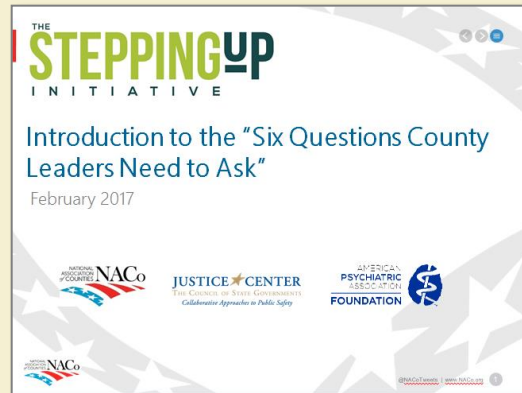


5 states have launched statewide Stepping Up initiatives.



Multiple Levels of Technical Assistance (TA)

Broad-Based TA



Intensive County-Level TA

DOUGLAS COUNTY, KANSAS A County Justice and Behavioral Health Systems Improvement Project

November 2019

Introduction

Commissioners in Douglas County, Kansas, passed a Stepping Up resolution in October 2015, joining a national movement to reduce the number of people in their local jail who have mental illnesses and co-occurring substance addictions. Launched in May 2015, *Stepping Up* is led by a partnership of The Council of State Governments (CSG) Justice Center, the National Association of Counties, and the American Psychiatric Association Foundation.

Named among the inaugural group of Stepping Up Innovator Counties in May 2018, Douglas County was recognized for its ability to gather accurate, accessible data on the prevalence of people in their jails who have serious mental illnesses (SMI) to understand the scale of the problem in its jurisdiction.² Building on their unique data capacity and strong interagency partnerships, Douglas County leaders sought a comprehensive analysis of the local criminal justice system. On June 12, 2018, Douglas County's elected officials and criminal justice and behavioral health leaders—represented by the county's Criminal Justice Coordinating Committee (CJCC), established in March 2016—asked the CSG Justice Center to conduct an in-depth, cross-systems data analysis of the flow of people with SMI and co-occurring substance addictions through the Douglas County criminal justice system and to identify ways to achieve better health and public safety outcomes.

DOUGLAS COUNTY, KANSAS AT A GLANCE

Population (as of 2018):
121,436 people

County seat:
LAWRENCE

5th
most
populous
county in
Kansas

Law enforcement agencies:

- Baldwin City Police Department
- Douglas County Sheriff's Office
- Eudora Police Department
- Lawrence Police Department
- University of Kansas Public Safety Office

Douglas County Correctional Facility

State Initiatives and Policy

Pennsylvania Launches First-in-Nation Stepping Up Technical Assistance Center Focused on Helping Counties Reduce Number of People in Jail with Mental Illnesses



October 19, 2018
By CSG Justice Center Staff

Secretaries of Pennsylvania's Department of Health, Department of Corrections, and others launched a first-of-its-kind resource center on Oct. 15 in Philadelphia focused on helping counties reduce the number of people with mental illnesses in jail through research-driven approaches.



JANUARY 2017

Reducing the Number of People with Mental Illnesses in Jail

Six Questions County Leaders Need to Ask

Risë Haneberg, Dr. Tony Fabelo, Dr. Fred Osher, and Michael Thompson

1

Is our leadership committed?

2

Do we conduct timely screening and assessments?

3

Do we have baseline data?

4

Have we conducted a comprehensive process analysis and inventory of services?

5

Have we prioritized policy, practice, and funding improvements?

6

Do we track progress?

THE STEPPINGUP INITIATIVE



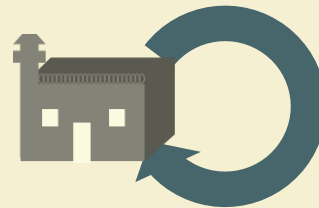
1. Reduce the number of people with mental illnesses booked into jails



2. Shorten the length of stay in jails for people who have mental illnesses



3. Increase connection to treatment for people who have mental illnesses



4. Reduce recidivism rates for people who have mental illnesses

Stepping Up Snapshot

Indicator	Nationally	In Kansas
Counties that have passed a Stepping Up resolution to demonstrate leadership commitment	526	8
Innovator Counties with access to accurate baseline data on SMI in jail	27	3

Douglas County, Kansas and Stepping Up

Mike Brouwer, Criminal Justice Coordinator

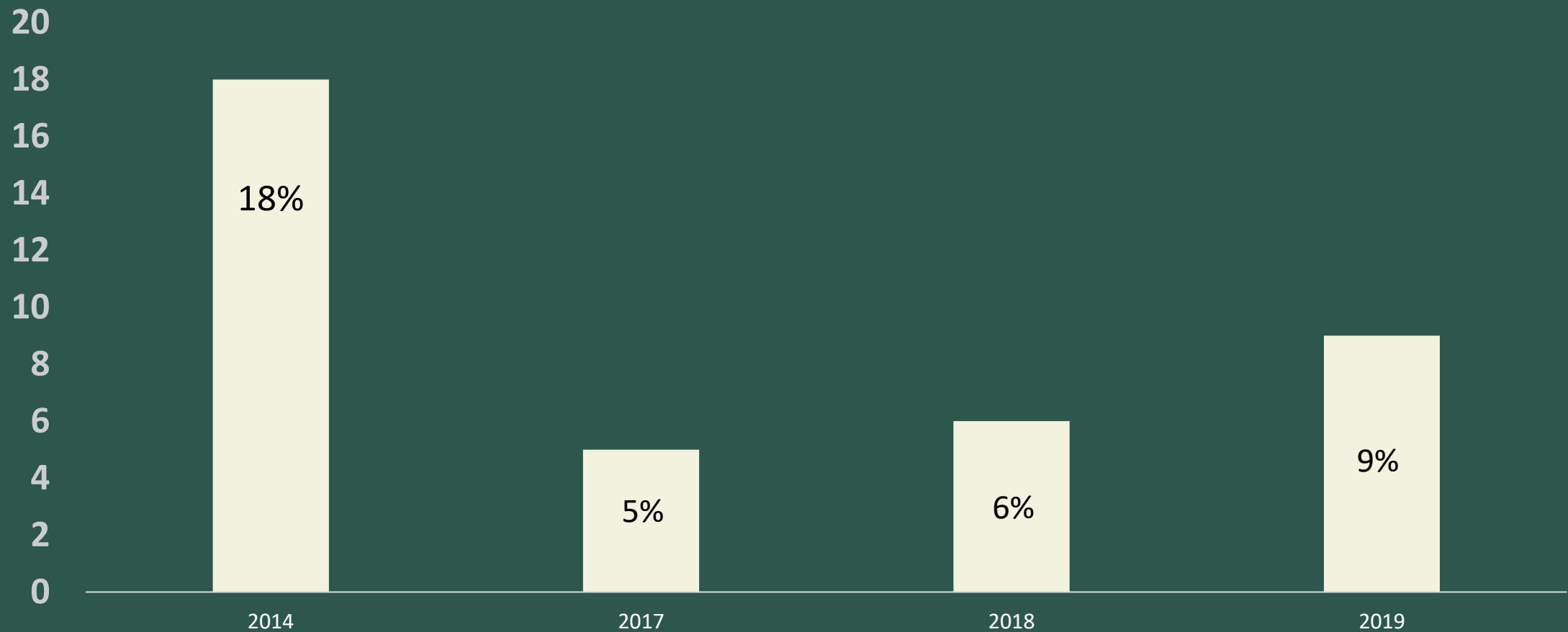
Douglas County Overview

- Mental Health/Criminal Justice work began with a part-time clinician working in the jail in 2001
- As collaboration grew, so did support:
 - Sheriff McGovern made this a priority
 - Bert Nash CMHC supported the work
 - University of Kansas provided leadership
- Grants improved data and added staff

Douglas County Overview

- Joined in 2015
- Provided a framework:
 - Improved data collection and analysis
 - Access to a national network of peers
 - Data and best practices led to targeted funding requests
 - Goals have been set

Over 50% Reduction in SMI Bookings in Douglas County Jail



Getting Started

- Both Johnson and Douglas Counties started small
- Douglas started the data collection with paper & pencil
- Join the Stepping Up Initiative
- Sign-up for the email blasts and network calls
- Utilize the Kansas Technical Assistance Center



Introducing the Kansas Stepping Up Technical Assistance Center

Kati Habert, Program Director, The Council of
State Governments Justice Center

Kansas Stepping Up Technical Assistance Center



Across Kansas, local communities recognize the growing need to find better solutions for linking people with mental illnesses to treatment and services while improving public safety. In coordination with the Governor's Behavioral Health Services Planning Council and the Mental Health in Jails workgroup, the Kansas Department for Aging and Disability Services is working with local behavioral health and law enforcement leaders to address this need.

The Kansas Stepping Up Technical Assistance Center will supply:

1. Connections with sites across Kansas and nationally to facilitate peer learning and provide concrete examples of successful strategies and policies;
2. Access to national experts and a central information bank on best practices; and
3. Guidance on the high-impact strategies and policies that achieve lasting results.

<https://stepuptogether.org/ta/kansas>

What is a Technical Assistance (TA) Center?

Dedicated CSG Justice Center staff support to one-on-one onsite and distance training, group trainings, coaching from local and national experts, and access to resources and guidance on the intersection of mental health and the justice system

Objectives of the Stepping Up Kansas TA Center

1. Establish and implement data-driven plans to reduce the number of people with mental illnesses in local jails
2. Identify best practice sites
3. Create a central information bank for counties across KS
4. Determine state level policies that can be adjusted or implemented to improve local level efforts to reduce the number of people with SMI in jails within the broader context of Justice Reinvestment in KS

Benefits of a State Stepping Up TA Center

- Connections with sites across Kansas and nationally to facilitate peer learning and provide concrete examples of successful strategies and policies;
- Access to local and national experts and a central information bank on best practices; and
- 1-1 and group guidance on the high-impact strategies and policies that achieve lasting results

Stepping Up Kansas TA Center Resources

- Dedicated staff point of contact based in Kansas
- Additional CSG Justice staff are available for consultation through one-on-one calls
- Office hours
- Virtual site visits
- Written resources

Key Resources to Get You Started

JANUARY 2017

Reducing the Number of People with Mental Illnesses in Jail

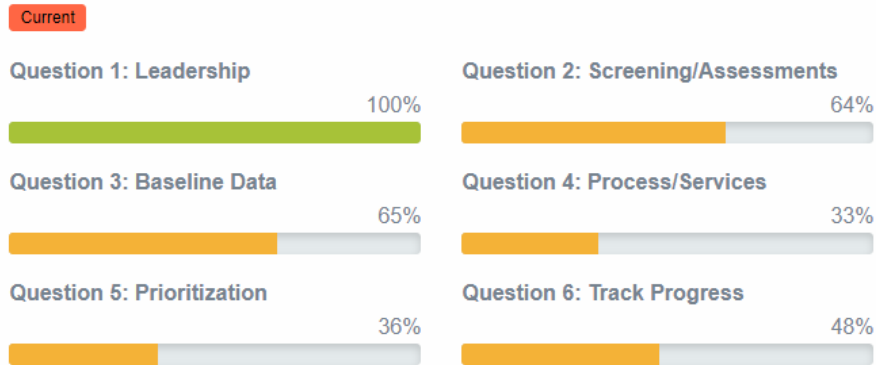
Six Questions County Leaders Need to Ask

Risë Haneberg, Dr. Tony Fabelo, Dr. Fred Osher, and

Reducing the Number of People with Mental Illnesses in Jail: Six Questions County Leaders Need to Ask

The Project Coordinator's Handbook

Stepping Up County Self-Assessment



STEPPING UP STRATEGY LAB

Enter your search parameters below to search our database of resources and view details about each resource. If you have a resource in our database that has been implemented in your county and you believe it should be included, please let us know.

Filters

SEARCH IN RESULTS

Search



TYPES

- ☐ Policy & Practice
- ☐ Program

Interventions

76 results found

Title	Type
Arrest warrants reviewed by mental health provider	Policy & Practice

stepuptogether.org

Getting Started with Stepping Up

- Has our county passed a Stepping Up resolution?
- Is there a representative planning team that is focused on criminal justice and behavioral health? Is there already a criminal justice coordinating committee (CJCC) or other body that can advance this work?
- Have we connected the dots between multiple initiatives in the county that address behavioral health in the justice system?
- Is there a standard definition of serious mental illness (SMI) shared among criminal justice and behavioral health agencies?
- Do we have baseline data on SMI prevalence in the jail?

Next Steps

- Onboarding Kansas-based CSG staff person to manage the TA Center
- CSG staff point of contact will begin individual outreach to counties this month to discuss their interest in the TA Center and their TA needs
- Ongoing meetings with agencies to ensure a robust TA approach that covers a wide variety of needs
- Sign up by emailing KansasSteppingUp@csg.org

Questions and Answers



Contact Information

- Mike Brouwer, mbrouwer@douglascountyks.org
- Andrea Clark, Andrea.Clark3@ks.gov
- Kati Habert, Khabert@csg.org
- Risë Haneberg, rhaneberg@csg.org
- Stepping Up Kansas, KansasSteppingUp@csg.org