

Operationalizing Reentry Programs for People with Behavioral Health Needs

This project was supported by Grant No. 2020-CZ-BX-K001 awarded by the Bureau of Justice Assistance. The Bureau of Justice Assistance is a component of the Department of Justice's Office of Justice Programs, which also includes the Bureau of Justice Statistics, the National Institute of Justice, the Office of Juvenile Justice and Delinquency Prevention, the Office for Victims of Crime, and the SMART Office. Points of view or opinions in this document are those of the author and do not necessarily represent the official position or policies of the U.S. Department of Justice.

Reentry Week | April 26–30, 2021

#ReentryMatters | #ReentryWeek | #ReentryWeek21

During Reentry Week, the National Reentry Resource Center (NRRC) will be your home for resources and virtual events .

Speakers

- **Christopher Arbour**, Regional 1 Correctional Administrator, Maine Department of Corrections
- **Susette Billedeaux**, Holistic Program Director, Tribal Defenders Office, Flathead Reservation Reentry Program, Confederated Salish and Kootenai Tribes
- **Catherine Chichester**, Executive Director, Co-Occurring Collaborative Serving Maine
- **Arlene Jacques**, Lieutenant/Programs, Sheriff's Office Jail, Cumberland County
- **Shawn LaGrega**, Deputy Director, Maine Pretrial Services
- **Faye Luppi, JD**, Project Director, Violence Intervention Partnership
- **Ann Miller**, Managing Attorney, Tribal Defenders Office, Flathead Reservation Reentry Program, Confederated Salish and Kootenai Tribes
- **Sarah Wurzburg**, Program Director, Behavioral Health, The Council of State Governments Justice Center

The Council of State Governments Justice Center

Mission

The CSG Justice Center develops research-driven strategies to increase public safety and strengthen communities.



www.csjusticecenter.org

Second Chance Act Programs Supporting Behavioral Health, Housing, and Family Supports

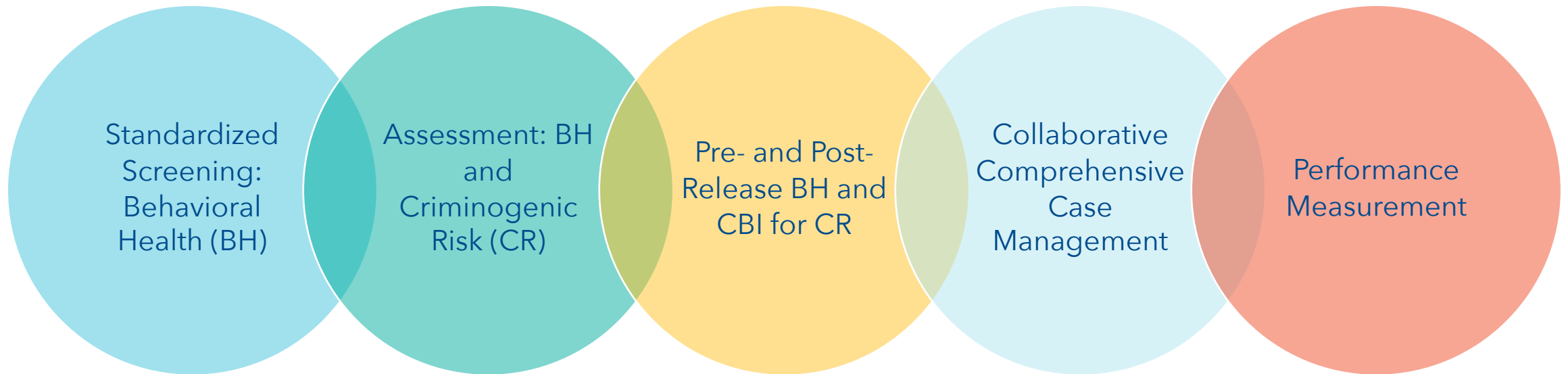
- Improving Reentry for Adults with Co-occurring Substance Use and Mental Health Disorders
- Improving Reentry for Adults with Substance Use Disorders
- Pay for Success Initiative: Outcomes-Based Contracting to Lower Homelessness
- Pay for Success Initiative: Outcomes-Based Contracting to Lower Recidivism
- Addressing the Needs of Incarcerated Parents with Minor Children
- Strengthening Relationships between Young Mothers and Their Children

Agenda

- Tips for Operationalizing Reentry Program for People with Behavioral Health Needs
- Confederated Salish and Kootenai Tribes
- Cumberland County, Maine

Development Steps for Behavioral Health Reentry Programs

Behavioral health includes reentry programs to address substance use disorders, mental illnesses and co-occurring substance use disorders and mental illnesses.



Key Topics for Operationalizing Programs

- Building partnerships to support reentry
- Identifying people for program
- Services
- Lessons learned from planning and implementing behavioral health reentry programs
 - Early implementation vs. program expansion
- Sustainability

Confederated Salish and Kootenai Tribes

**The Flathead Reservation Reentry Program: Public Defender
Based Supportive Services**

Holistic Defense at the Tribal Defenders

- Walk-in clinic
- Pro se assistance
- Assistance with collateral consequences: eviction assistance, driver's license restoration
- Cultural mentoring
- Community outreach and education
- Community service
- Mediation
- Justice and Mental Health Collaboration Program
- Flathead Reservation Reentry Program
- Family Defense
- Mental Health Client Advocates
- Morning Star Permanent Supportive Housing



The Flathead Reservation Reentry Program: Public Defender Based Supportive Services
Picture from: Blue Bay 2016, Tribal Defenders and clients working together for an annual community service/clean-up event.

Reentry Intake and Assessment Tool

- The RIAT is a combination of established measures and measures created by reentry staff to develop a risk/resiliency model
 - In-depth, hour-long interview as well as self-report measures
 - Level of Service Inventory-Revised (LSI-R)
 - Historical Loss Scale (HLS)
 - Historical Loss Associated Symptoms Scale (HLASS)
 - Demographic Information
 - Cultural Connectedness Scale (CCS)
 - Post-Traumatic Stress Checklist for DSM-5 (PCL-5)
- Provides an index of recidivism risk for each individual screened
- Serves as a screening tool for referral for more thorough assessment of mental health and chemical dependency needs
- Identifies immediate and long-term case management needs
- Goal: Develop a model with a more accurate assessment of risk for incarcerated and reentering Native American populations
 - Next year, we will collaborate with the Center for Court Innovation to refine and validate the RIAT



Desiree Fox defending her dissertation on the RIAT

Cumberland County, Maine

Cumberland County, Maine, Project Reentry for Adult Offenders with Co-Occurring Disorders

Goals:

- Identify 90 medium- to high-risk individuals with COD
- Develop comprehensive care plans
- Establish probation contacts
- Coordinate institutional and community service programs

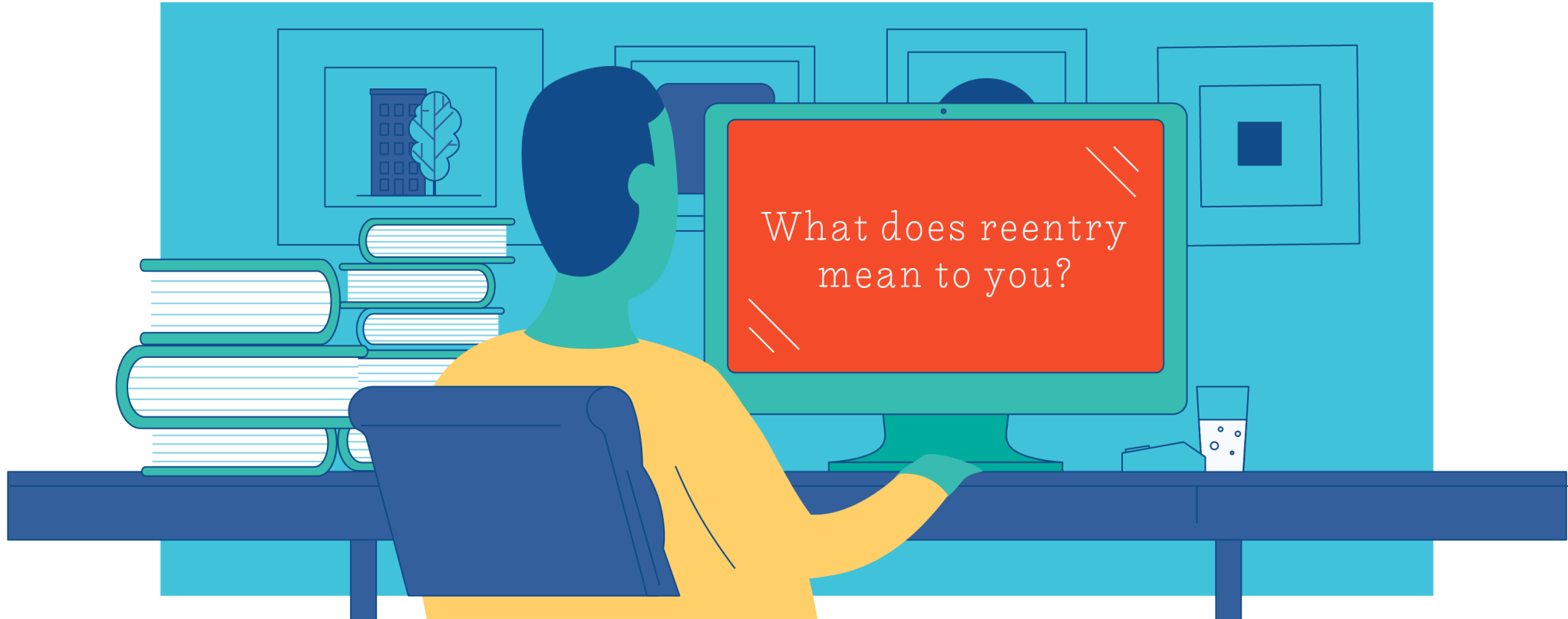
Objectives:

- Reduce recidivism
- Increase awareness of and access to correctional and community programs
- Increase quantity and quality of COD treatment, including MAT/psychotropic meds, and community supports, including housing, vocational, peers support, etc.

Critical Elements to Support Reentry

- Care coordination requires teamwork across programs and systems
- Case management and peer coaches support community inclusion
- Resources and access to community supports are vital, e.g., housing, medications, etc.
- Cultural shifts
- Correctional linkage with staff at the jail is critical
- Administrative and subawardee oversight is required and welcomed by the team

www.NationalReentryResourceCenter.org



The primary mission of the NRRRC is to advance the knowledge base of the reentry field.
The NRRRC serves as a convener and coordinator of SCA grantees.

Track News and Updates on Social Media

#ReentryMatters

#ReentryWeek

#ReentryWeek21



Thank you!

Join our distribution list to receive
National Reentry Resource Center updates!

<https://nationalreentryresourcecenter.org/subscribe>

For more information, contact:

info@nationalreentryresourcecenter.org