



**Justice Center**

THE COUNCIL OF STATE GOVERNMENTS

# Expanding First Response

Community Responder Program Assessment Tool Launch

November 16, 2022 | Anne Larsen & Ashtan Towles

# Today's Agenda

---

- Welcome and Introductions
- Expanding First Response Toolkit Overview
- Assessment Tool Walk-Through
- Questions and Answers



# Facilitators

---

- **Anne Larsen**, *Project Manager, Behavioral Health, CSG Justice Center*
- **Ashtan Towles**, *Senior Project Analyst, Behavioral Health, CSG Justice Center*

# The Council of State Governments Justice Center

---

We are a national nonprofit, nonpartisan organization that combines the power of a membership association, serving state officials in all three branches of government, with policy and research expertise to develop strategies that increase public safety and strengthen communities.

# Our Goals

---

- Break the cycle of incarceration
- Advance health, opportunity, and equity
- Use data to improve safety and justice

# Alkermes Inspiration Grant

---

**Alkermes Inspiration Grants program:** Funds programs supporting people impacted by serious diseases such as substance use and mental illness



# Introductions and Housekeeping

---

- Please introduce yourself in the chat and say hello!
- We will be using polls throughout the webinar! We look forward to learning more about you and for folks to learn who is in this virtual room together.
- Please use the chat or Q&A function for live answers to your questions.

# Poll Question 1: What is your role?

---



Advocate



Social service provider



Community responder program manager



Elected official



Law enforcement officer



Other



## Poll Question 2: Are you in a rural, urban, suburban, or Tribal jurisdiction?

---



Rural



Urban



Suburban



Tribal jurisdiction



Combination

# Expanding First Response Toolkit

---

- Community Engagement
- Needs Assessment
- Program Staffing
- Call Triaging
- Use of Data to Inform Decision-Making
- Safety and Wellness
- Financial Stability
- Legislative/Policy Strategies



# Poll Question 3: I'm looking for guidance mostly for...

---



Call Triaging



Program Staffing/Workforce



Data Collection



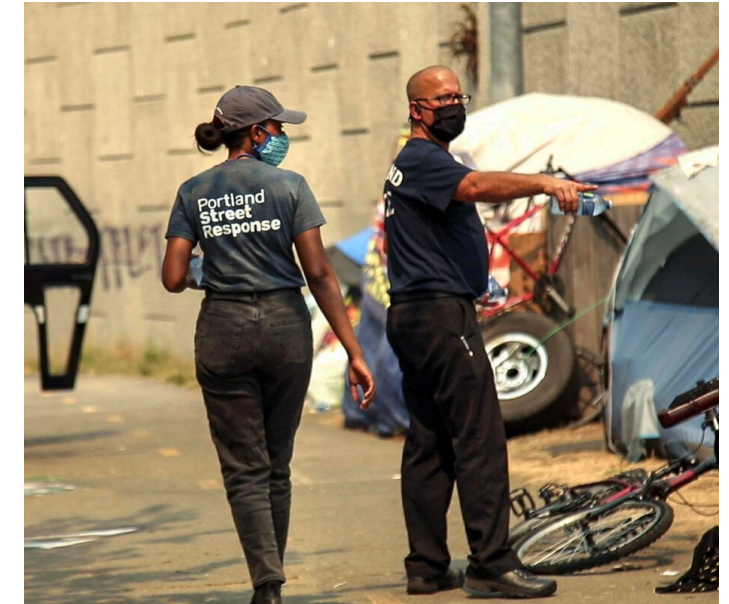
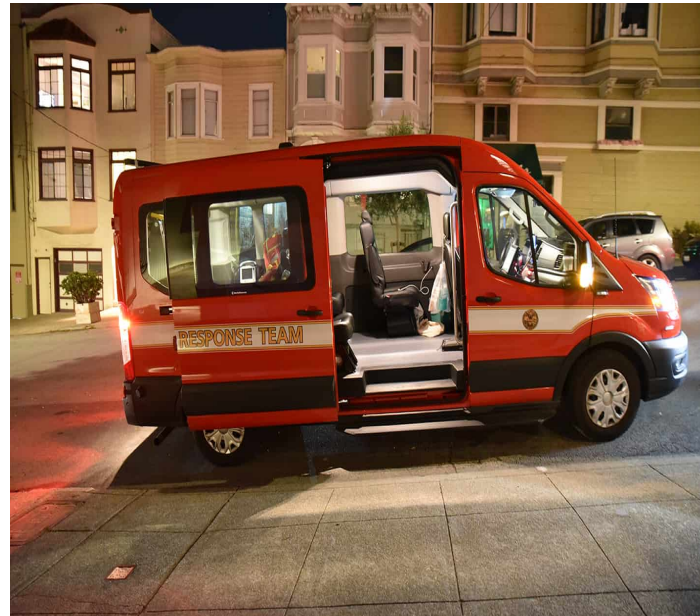
Funding (Opportunities)



Community Engagement

# Expanding First Response Program Highlights

---



# Assessment Tool Types and Phases

## 3 Types

- 1) Readiness
- 2) Implementation
- 3) Operational

## 5 Phases

- 1) Exploration
- 2) Planning
- 3) Early Implementation
- 4) Pilot Program
- 5) Fully Operational

### Select Assessment Tool

Select the assessment tool that your community's program aligns with most. Not sure where to start? Read the descriptions below.

#### Readiness Assessment Tools

Exploration

Planning

#### Implementation Assessment Tool

Early Implementation

#### Operational Assessment Tools

Pilot Program

Fully Operational

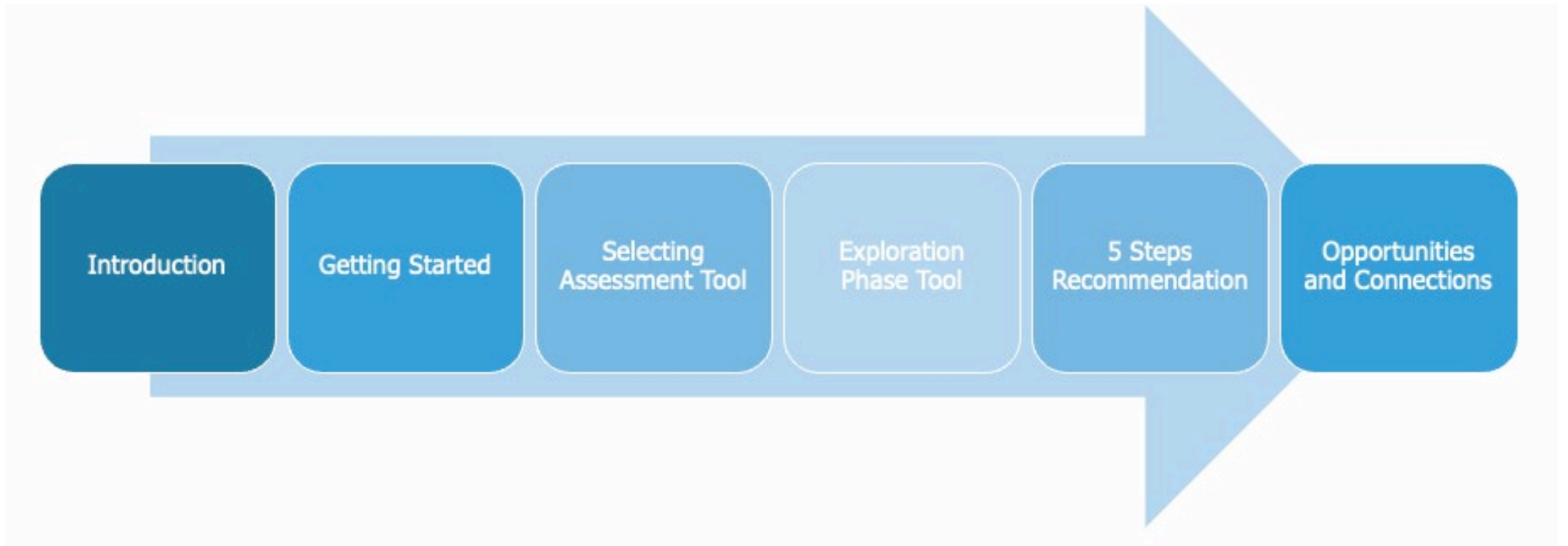
# Poll Question 4: What phase is your community in?

---

- 1. Exploration:** Considering ways to expand responses
- 2. Planning:** Taking steps to implement a program
- 3. Early Implementation:** Secured funding and a program manager
- 4. Pilot Program:** Active program but not with 24/7 operations
- 5. Fully Operational:** Community responder teams at full scale

# Assessment Tool Walk-Through

---





# Thank You!

Join our distribution list to receive updates and announcements:

<https://csgjusticecenter.org/resources/newsletters/>

For more information, please contact Anne Larsen at [alarsen@csg.org](mailto:alarsen@csg.org) or Ashtan Towles at [atowles@csg.org](mailto:atowles@csg.org)

*The presentation was developed by members of The Council of State Governments Justice Center staff. The statements made reflect the views of the authors and should not be considered the official position of The Council of State Governments Justice Center, the members of The Council of State Governments, or the funding agency supporting the work.*

© 2022 The Council of State Governments Justice Center